

⚠ WARNING DO NOT CONNECT DIRECTLY TO HIGH VOLTAGE POWER!
Read all warnings and installation instructions thoroughly.

Safety & Warnings

- Install in accordance with the national and local regulations.
- This product is intended to be installed and serviced by a qualified, licensed electrician.
- Only install with a Class 2 DC Constant Voltage LED driver.
- Only use copper wiring.
- Ensure applicable wire is installed between driver, fixture, and any controls in between. When choosing wire, factor in voltage drop, amperage rating, and type (in-wall rated, wet location rated, etc.). Inadequate wire installation could overheat wires, and cause a fire.
- Strip light and attached wire leads are not rated for in-wall installation.
- Strip light and leads are rated as submersible. ENSURE to make electrical connections OUTSIDE of liquid or in a submersible-compliant electrical enclosure.
- HYDROLUME is not rated as field-cuttable. Do not modify or disassemble this product beyond instructions or this warranty will be void.



Quick Specs

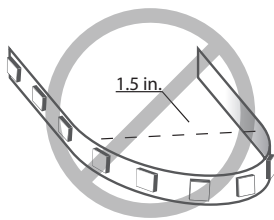
Input Voltage	24VDC Constant Voltage	
Power Consumption	Standard	1.13W/ft. (0.65W/cut point)
	Plus	2.04W/ft. (1.2W/cut point)
Maximum Run	Standard	81.5 ft.
	Plus	32.6 ft.

Included Model(s)	DI-24V-HL35-80-** DI-24V-HL65-72-** DI-24V-HLP35-80-** DI-24V-HLP65-72-**
Ambient Temperature †	-4° ~ 122°F (-20° ~ 50°C)
Environment	Outdoor/waterproof/submersible/IP68

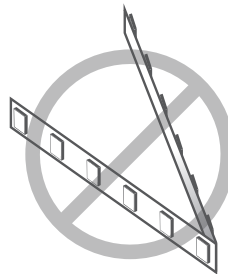
** indicates model and CCT. For full specifications.

† Do not install product in an environment outside the listed ambient temperature.

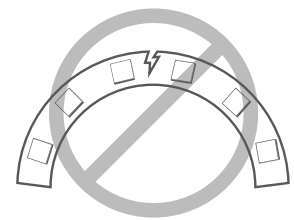
Tape Light Handling



Do not bend LED strip light to a diameter less than 1.5 inches.



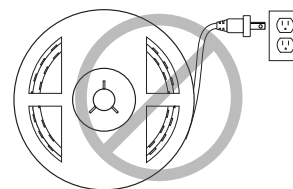
Do not fold or crease LED strip light.



Do not bend LED strip light on a horizontal plane.



Do not cover strip light with any materials.



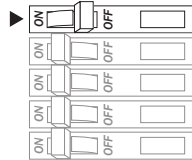
Do not power strip light while attached to spool or tightly coiled.

Installation

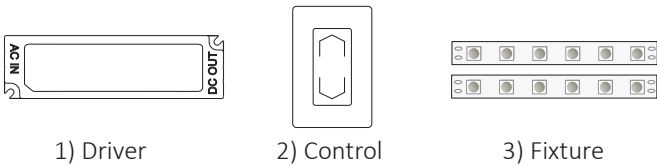
Prior to installation, configure and pre-test your LED system to ensure all components operate correctly. Install in accordance with national and local electrical codes.

1 Turn OFF High Voltage AC Power at the main breaker.

⚠ WARNING Shock Hazard. May result in serious injury or death. Turn off power at circuit breaker before installing this product.



2 Determine Locations to Install 3 Main Components. Refer to 'System Diagrams.'



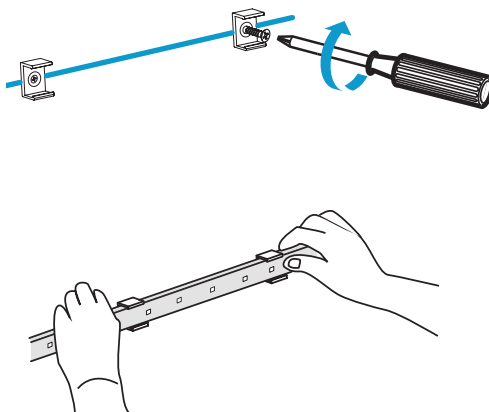
WIRE GAUGE & VOLTAGE DROP

Ensure applicable wire is installed between driver, fixture, and any controls in between. When choosing wire, factor in voltage drop, amperage rating, and type (in-wall rated, wet location rated, etc.).

3 Mount HYDROLUME to desired surface. See options: a, b & c.

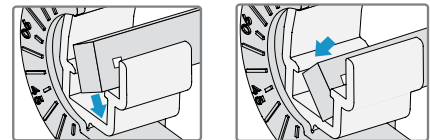
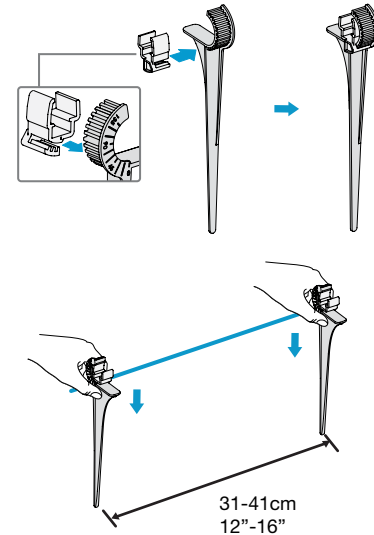
a) HYDROLUME Mounting Brackets

Mark placement for HYDROLUME Mounting Brackets -- roughly 12 inches apart. Fasten brackets with M2.9 (#4) screw or similar size (not provided). Once mounted, fasten HYDROLUME to brackets.



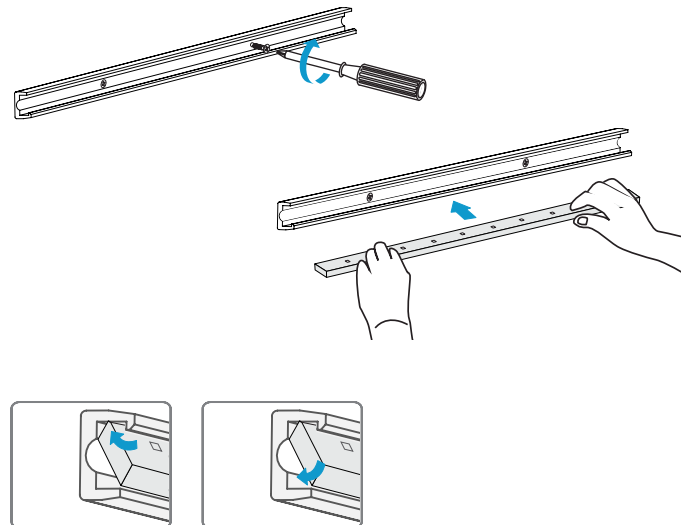
b) HYDROLUME Stake Brackets

Slide bracket into stake at desired angle to position HYDROLUME strip. Press stakes into ground roughly 12 - 16 inches apart. Once stakes are planted into ground, firmly press HYDROLUME strip light into brackets.

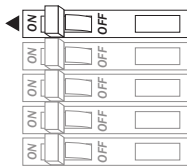


c) HYDROLUME Mounting Channel

Mount channel to desired surface using minimum 2x M2.9 (#4) screws or a similar size (not provided). Once channel is mounted, firmly press HYDROLUME into channel pressing one end to the other.



- 4 **Attach Control and Driver. Only use copper wiring.** Verify a compatible constant voltage driver is installed. Utilize applicable wiring when installing outdoors.
- 5 **Review the full system.** Ensure all polarities are correct and connections are secured.
- 6 **Install Additional Components, Verify Connections, and Turn Main Power ON at Breaker.**



SYSTEM WORKING IMPROPERLY?

Turn OFF main power at breaker and verify all connections. Review the 'Wiring Connections', 'System Diagrams', and dimming control installation guides.

Troubleshooting

Prior to troubleshooting, ensure all items are a compatible system and main power is turned ON.

Shift in brightness and/or kelvin	<ul style="list-style-type: none"> Low voltage DC doesn't travel as far as high voltage AC. Ensure applicable AWG (gauge) is installed between strip light and LED driver.
Some LEDs are not functional	<ul style="list-style-type: none"> Ensure strip light has not been bent excessively, which could damage circuitry.
Lights are flickering	<ul style="list-style-type: none"> Ensure a compatible driver and/or dimming control is installed. Check for loose connections.
Lights are turning on/off repeatedly	<ul style="list-style-type: none"> Ensure driver is not overloaded. An overloaded driver will trip the internal auto-reset (of driver) repeatedly, turning the system on/off.

Additional Resources

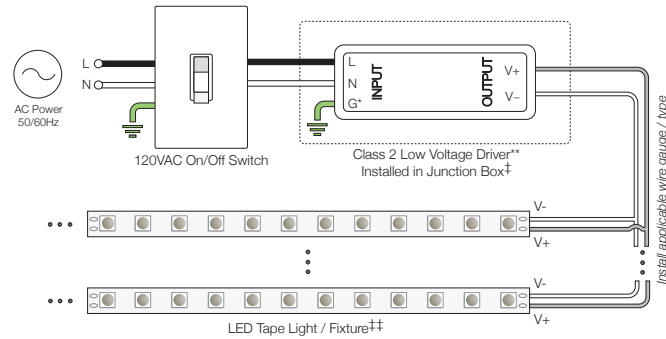
Visit the online product page at www.DiodeLED.com for additional product specifications & warranty information. *This installation guide includes but is not limited to the products below:*

- **HYDROLUME LED STRIP LIGHT Specification Sheet**
For full specifications.
- **Voltage Drop Charts**
Use to specify appropriate wire gauge for installation. Available at the 'Tools & Resources' page at www.DiodeLED.com.

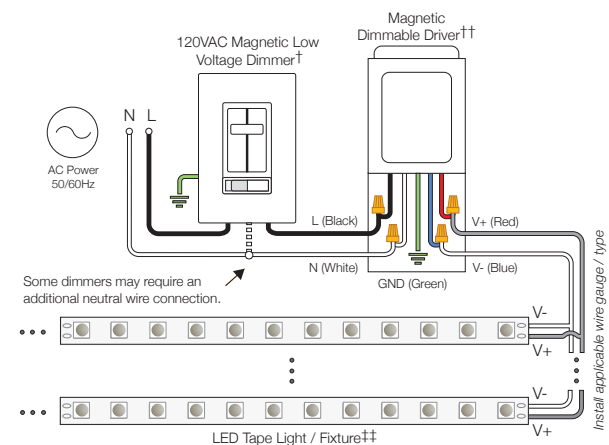
System Diagrams

The following diagrams are provided as example system designs. For information regarding larger systems or systems not pictured below, please see our web page or contact technical support. Always review each component installation guide for detailed and up-to-date wiring instructions. Install in accordance with national and local electrical codes.

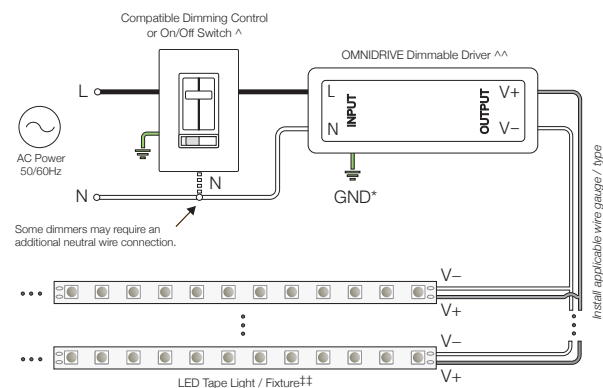
Traditional ON/OFF Switch System



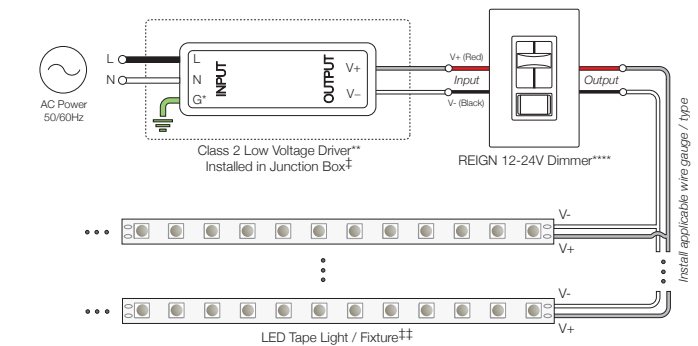
Magnetic Dimmable Driver System



OMNIDRIVE™ Electronic Dimmable Driver System



REIGN™ 12-24V Dimmer System



* Driver may not require a fault ground connection. Refer to driver specifications for additional information.

** Install a compatible Class 2 constant voltage driver. Refer to each driver specification sheet for full power ratings & load deratings.

*** Install a Class 2 constant voltage driver compatible with a low voltage PWM controller/dimmer switch. Refer to each driver specification sheet for full power ratings & load deratings.

**** Determine the number of low voltage outputs of the driver when installing multiple PWM controllers/dimmer switches. No more than one PWM controller/dimmer switch can be attached to a single output of the driver.

^ Install a compatible dimming control or switch. See the 'Electronic Dimmable Driver / Dimmer Compatibility List' for compatible dimming controls. See the dimming control manufacturer installation guide for complete wiring instructions.

^^ Ensure to load the driver at least 60% the labeled load for proper dimming performance (required for dimmable installations only).

† Install a compatible magnetic low voltage dimmer switch. See the MFG installation guide for complete wiring instructions.

†† Dimmable drivers may require a compatible magnetic low voltage dimmer switch to supply the driver and fixture with appropriate input voltage. Do not test or install directly connected to an AC power source or to an On/Off switch. Refer to each driver specification sheet for full power ratings & load deratings. See spec sheet for potential updated information. See dimmer switch manufacturer specifications for minimum load recommendations.

‡ Refer to driver or controller specifications for a compatible junction box.

‡‡ See fixture specifications for maximum series run limits.

QUESTIONS?

Visit www.DiodeLED.com or contact Customer Support at info@DiodeLED.com or 1.877.817.6028 Monday through Friday, 7:00am- 5:00pm PST.